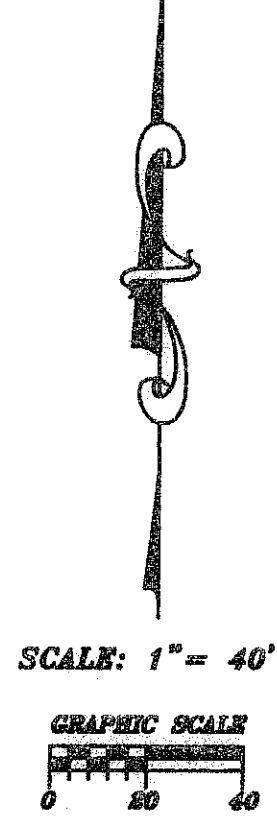
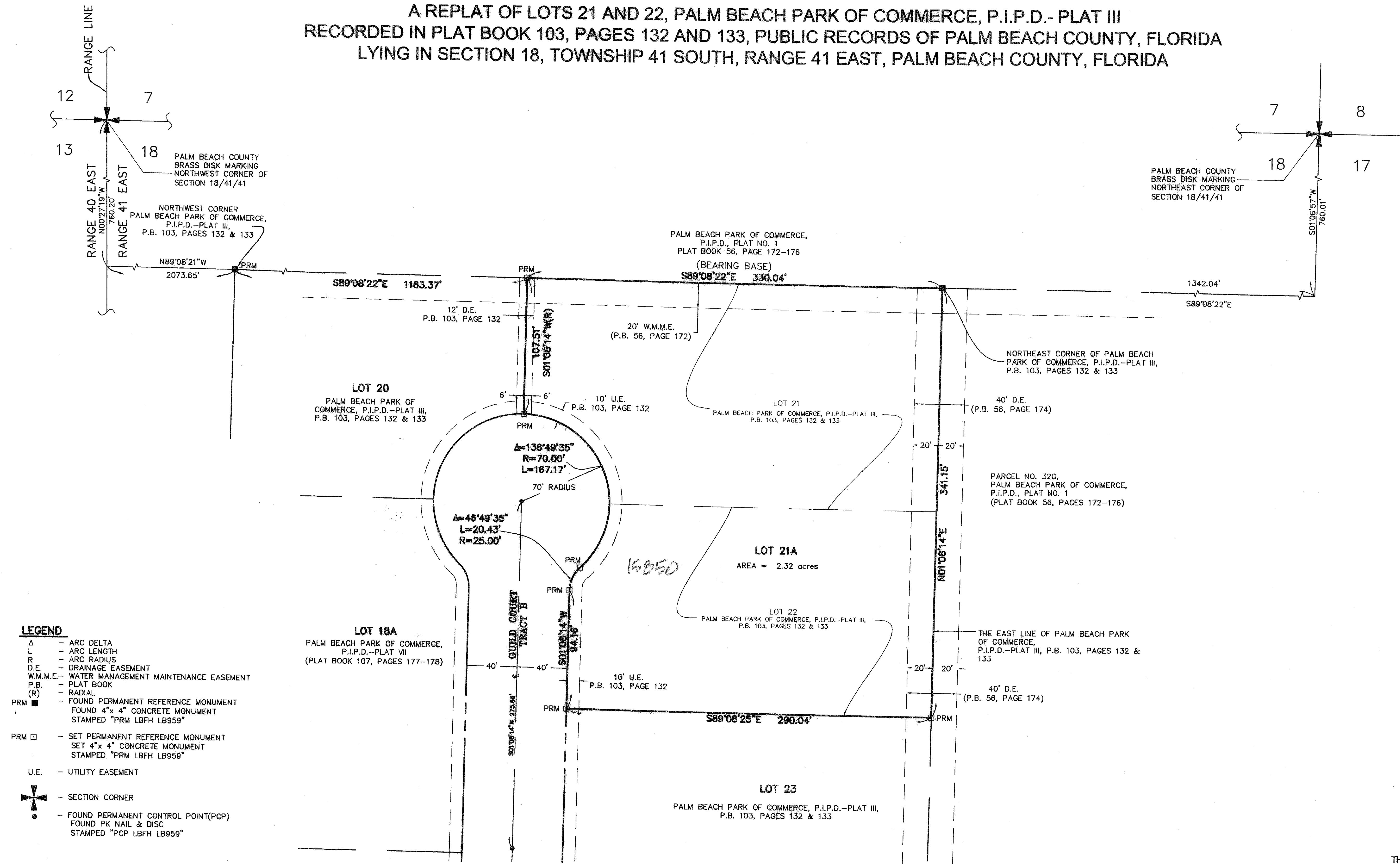


PALM BEACH PARK OF COMMERCE, P.I.P.D. - PLAT XII

175

A REPLAT OF LOTS 21 AND 22, PALM BEACH PARK OF COMMERCE, P.I.P.D.- PLAT III
RECORDED IN PLAT BOOK 103, PAGES 132 AND 133, PUBLIC RECORDS OF PALM BEACH COUNTY, FLORIDA
LYING IN SECTION 18, TOWNSHIP 41 SOUTH, RANGE 41 EAST, PALM BEACH COUNTY, FLORIDA



SUBDIVISION PALM BEACH PARK OF COMMERCE PL. 12
 BOOK 103 PAGE 133
 FLOOD ZONE B
 ZONING RFP
 ZONE 25-47B
 DATE 8/20
 BY NAME

THIS INSTRUMENT PREPARED BY:
 RICHARD H. SMITH
 PROFESSIONAL SURVEYOR AND MAPPER
 FLORIDA LICENSE NUMBER 5239
 FOR
 L.B.F.H., INC.
 CONSULTING ENGINEERS, SURVEYORS & MAPPERS
 3550 S.W. CORPORATE PARKWAY
 PALM CITY, FLORIDA 34990
 LB-959

lbfh CONSULTING CIVIL ENGINEERS, SURVEYORS & MAPPERS
 "Partners for Results, Value by Design"
 3550 S.W. Corporate Parkway, Palm City, Florida 34990
 (772) 286-3883 Fax: (772) 286-3925
 BPR & FBPE License No: 950 www.lbfh.com